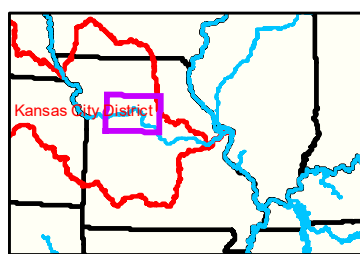
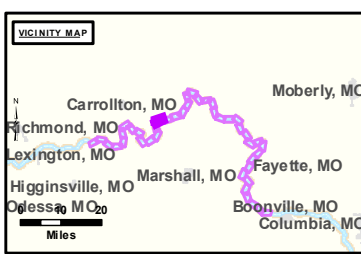


Notes

Waverly Gage = 9.86 at time of collection 08 September 2022"

Gage_L



LEGEND

< 8	< 8 ft	Green Passing	Green	AIS Green CAN
8 - 9	8 - 9 ft	Red Passing	Red	AIS Red NUN
9 - 9.5	9 - 10 ft	Green Crossing	Green CAN	Red NUN
9.5 - 10	10 - 12 ft	Red Crossing	Junction	
10 - 12	River Mile			
12 - 14	Sailing Line			
14 - 16	BSNP Structure			
> 16	Levee			

Scale: 0 312.5 625 937.5 1250 2,500 Feet

Vertical Datum: Soundings are shown in feet and indicated depths are referenced to water surface at time of collection.

The information depicted on this map represents the results of a survey conducted on the date indicated and can only be considered to represent the general condition existing at that time.

The location of navigation aids are based on and provided by the U.S. Coast Guard.



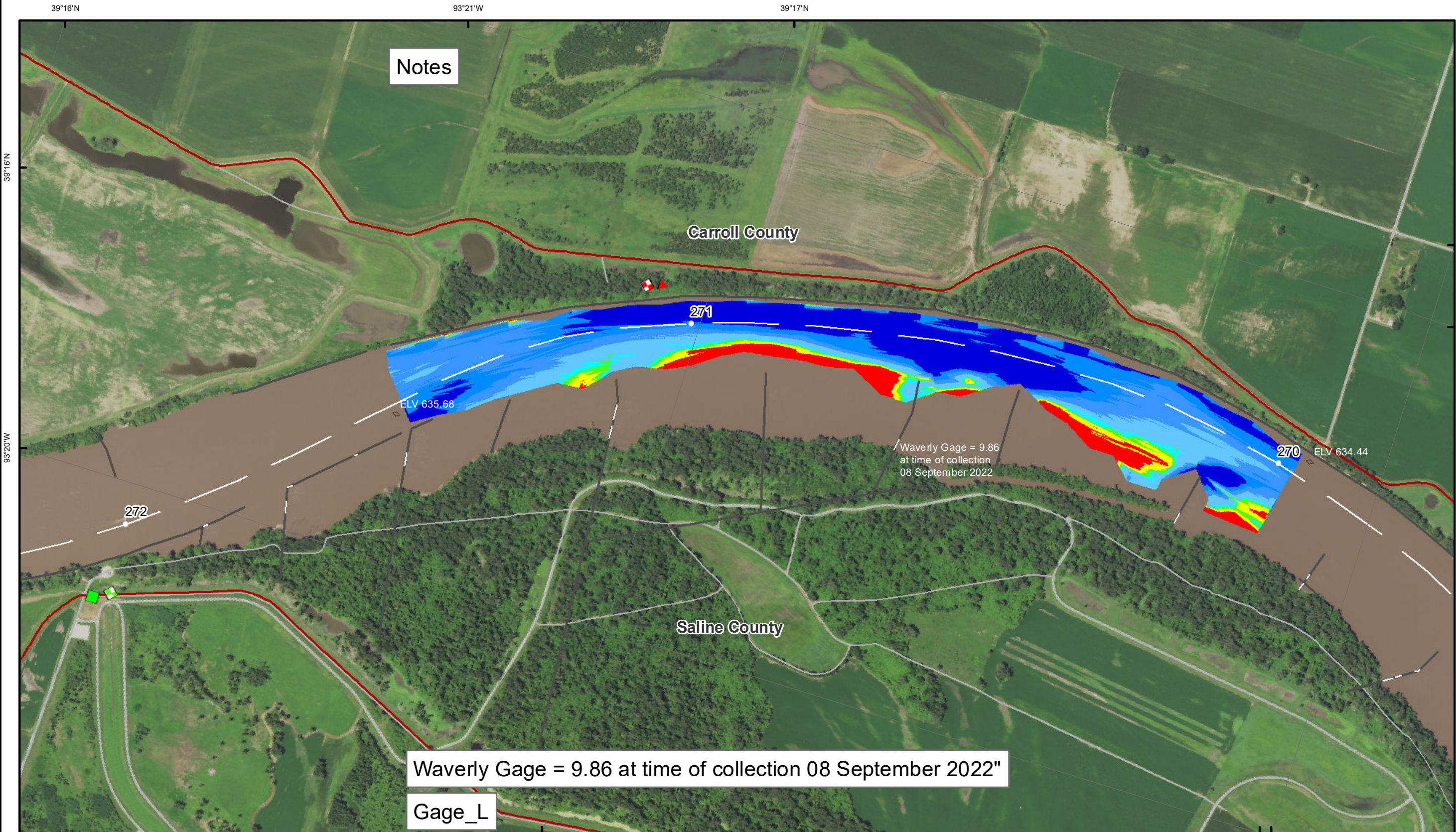
DISCLAIMER: The United States Government is authorized to reproduce and distribute reprints for government purposes not withstanding any copyright notation that may appear hereon. The United States Government makes no warranty, express or implied, concerning the accuracy or completeness of the information contained herein. The United States Government is not liable for any damages, including consequential damages, arising from the use of the information contained herein. The United States Government is not liable for any damages, including consequential damages, arising from the use of the information contained herein. The United States Government is not liable for any damages, including consequential damages, arising from the use of the information contained herein.

KANSAS CITY DISTRICT MISSOURI RIVER AREA OFFICE			
Submitted By:	NR-AO	Received By:	NR-AO
Submitted:		Received:	
Approved:		Checked By:	NR-AO

Survey Information

MO_03_LMR
MO_03_LMR_20220908_CS_270_0_271_5_SORT
08 September 2022

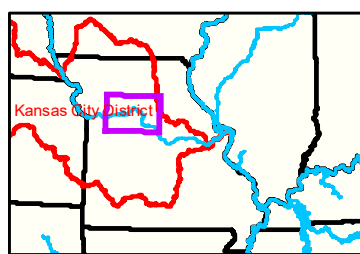
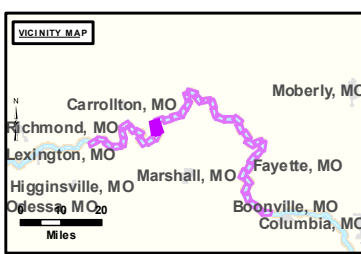
Sheet Number
29 of 42



Notes

Waverly Gage = 9.86 at time of collection 08 September 2022"

Gage_L



LEGEND

	< 8		< 8 ft		Green Passing		Green		AIS Green CAN
	8 - 9		8 - 9 ft		Red Passing		Red		AIS Red NUN
	9 - 9.5		9 - 10 ft		Green Crossing		Red		Green CAN
	9.5 - 10		10 - 12 ft		Red Crossing		Junction		Red NUN
	10 - 12		River Mile						
	12 - 14		Sailing Line						
	14 - 16		BSNP Structure						
	> 16		Levee						

Buoy

	AIS Green CAN
	AIS Red NUN
	Green CAN
	Red NUN

Scale: 0 312.5 625 937.5 1250 2500 Feet

NOTES:
 Horizontal Coordinate System: World Geodetic System of 1984 (WGS84), projected to the Universal Transverse Mercator (UTM) Zone 15 North. Distances in U.S. Survey Feet.
 Vertical Datum: Soundings are shown in feet and indicated depths are referenced to water surface at time of collection.
 The information depicted on this map represents the results of a survey conducted on the date indicated and can only be considered to represent the general condition existing at that time.
 The location of navigation aids are based on and provided by the U.S. Coast Guard.



DISCLAIMER: The data represents the results of a survey conducted on the date indicated and can only be considered to represent the general condition existing at that time. The information depicted on this map represents the results of a survey conducted on the date indicated and can only be considered to represent the general condition existing at that time. The location of navigation aids are based on and provided by the U.S. Coast Guard.

KANSAS CITY DISTRICT MISSOURI RIVER AREA OFFICE	
Surveyed By: NR-AO	Checked By: NR-AO
Drawn By: NR-AO	Approved By: NR-AO

Survey Information
 MO_03_LMR
 MO_03_LMR_20220908_CS_270_0_271_5_SORT
 08 September 2022

Sheet Number
 30 of 42